



MONTHLY MEMBERSHIP PROGRESS REPORT

District 128

Results as of: 10/31/2014

GMT: Elisabeth Haderer

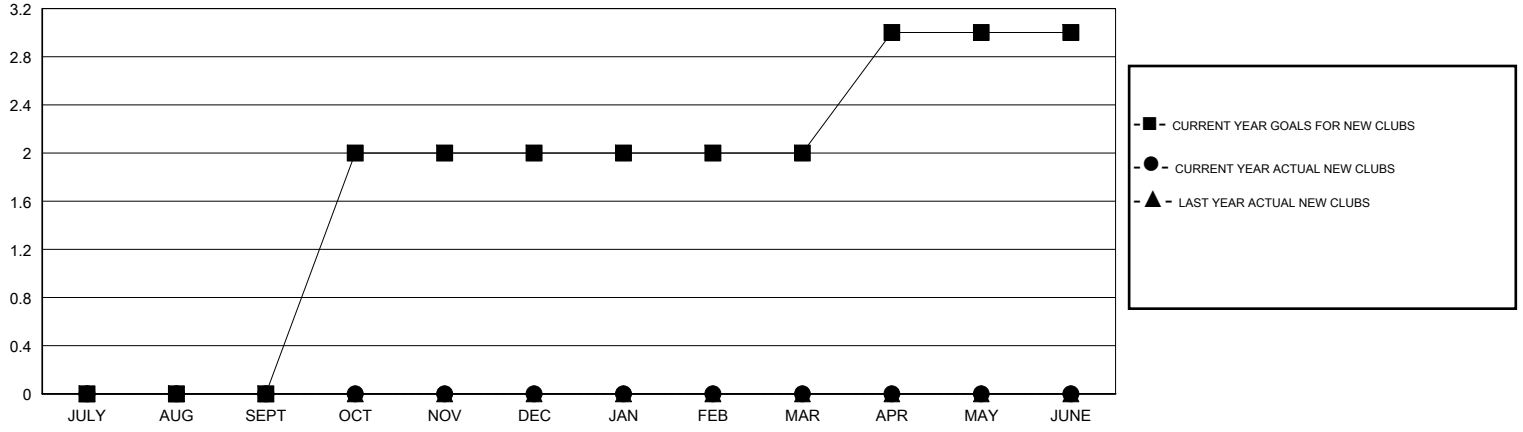
LOCATION ISRAEL

GMT CA 4

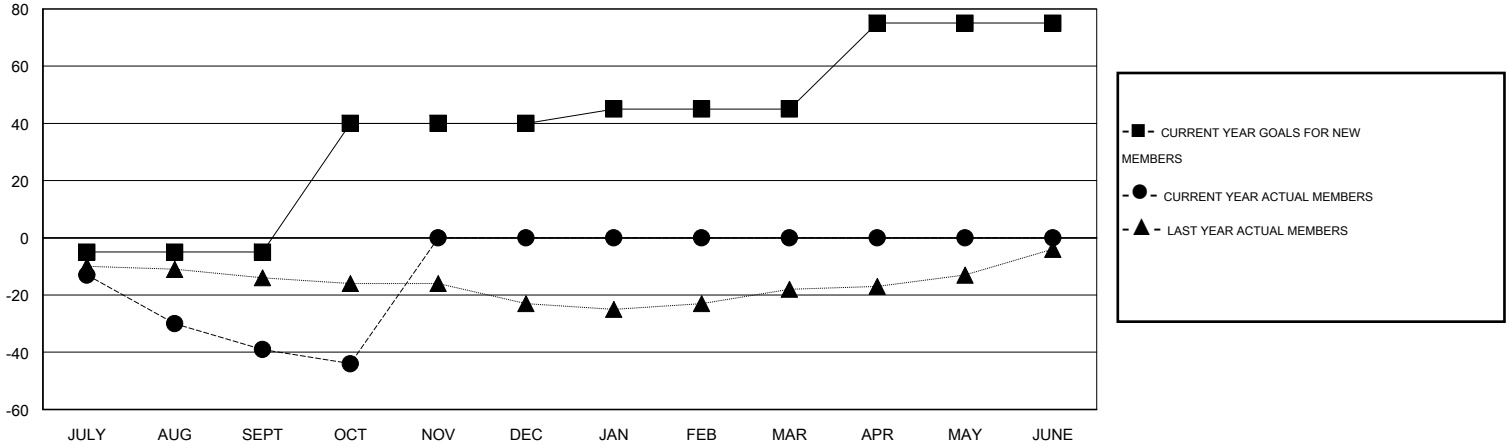
Clubs				
RESULTS FOR 2014-2015				
QUARTER	NEW CLUB GOAL	NEW CLUBS	DROPPED CLUBS	NET GAIN/LOSS
JULY/AUG/SEPT	0	0	0	0
OCT/NOV/DEC	2	0	0	0
JAN/FEB/MAR	0	0	0	0
APR/MAY/JUNE	1	0	0	0

Members				
RESULTS FOR 2014-2015				
QUARTER	NEW MEMBER GOAL	CHARTER AND NEW MEMBERS ADDED	DROPPED MEMBERS	NET GAIN/LOSS
JULY/AUG/SEPT	-5	0	39	-39
OCT/NOV/DEC	45	5	10	-5
JAN/FEB/MAR	5	0	0	0
APR/MAY/JUNE	30	0	0	0

GOALS AND ACTUAL NEW CLUBS CUMULATIVE



GOALS AND ACTUAL MEMBERS CUMULATIVE



DROPPED CLUBS: 0	2 CLUBS OF 33 ADDED 1 OR MORE NEW MEMBERS	<u>GENDER DISTRIBUTION</u>	
<u>DROPPED MEMBERS</u>		MALE	426 (45.51%)
DECEASED	CLICK HERE FOR HEALTH ASSESSMENT DATA	FEMALE	510 (54.49%)
CLUB CANCELLED		FAMILY UNIT MEMBERS	610
OTHER		HEAD OF HOUSEHOLD	305
TOTAL		NON-HEAD OF HOUSEHOLD	305